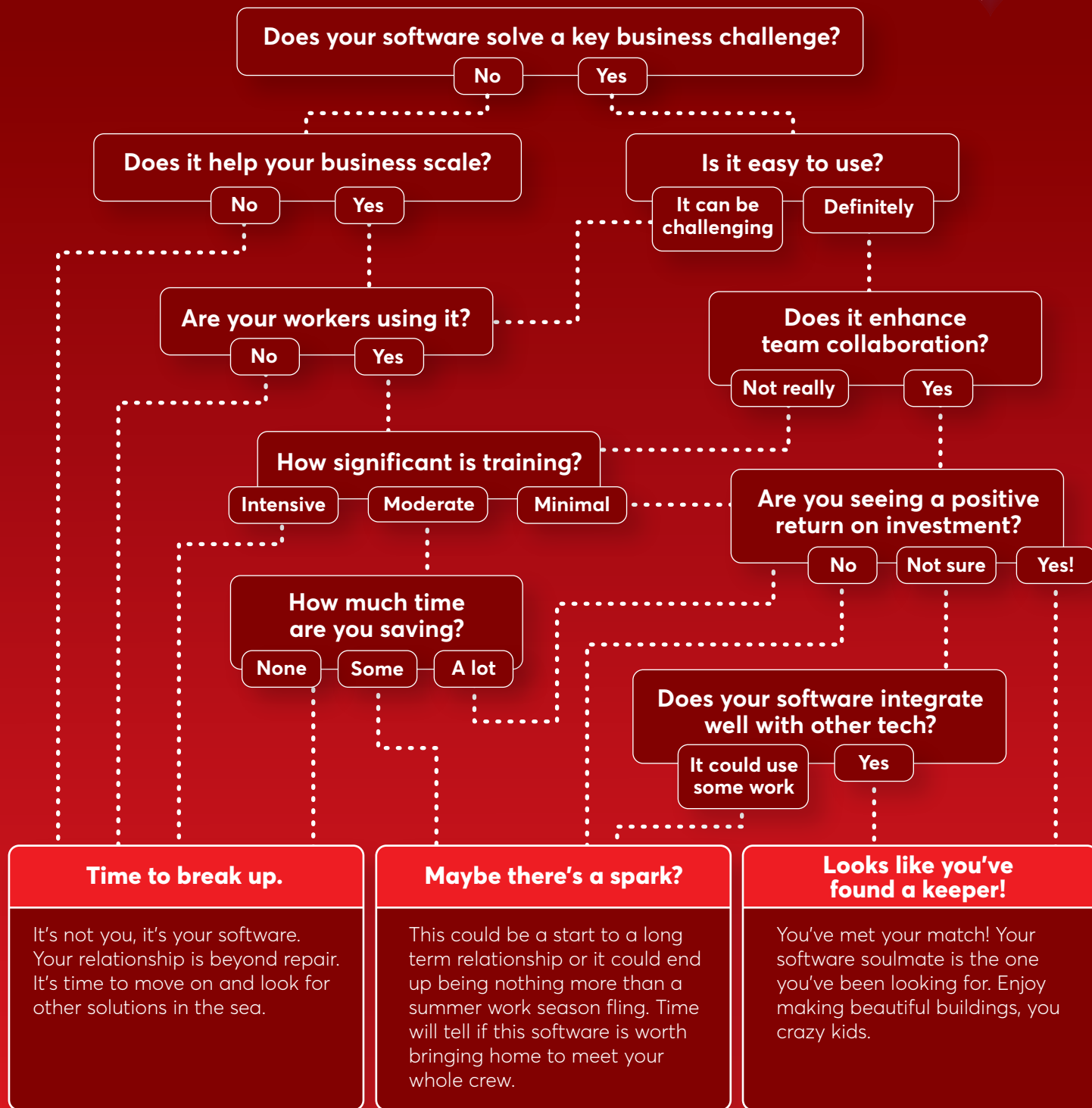


IS YOUR CONSTRUCTION SOFTWARE YOUR

True Love?



5 Reasons

WHY CONSTRUCTION TECH RELATIONSHIPS FAIL

Source: PlanGrid and FMI Construction Disconnected Report

A poor fit to begin with

36%

say tech doesn't work with current processes

Not well embraced

25%

find tech has low adoption

It's complicated

22%

report tech is difficult to use

Too much to nurture

22%

say tech has inadequate training

Doesn't play well with others

22%

find tech doesn't integrate with existing solutions